

A world map in shades of blue, centered on the Atlantic Ocean, serving as a background for the top section of the invitation.

Invitation

Executive Briefing & Roundtable Dinner Meeting

Exploring Scenarios for Commercial Nuclear Power Post Fukushima

**25 May 2011 from 6:30 to 8:30PM
Thon Brussels City Centre Hotel, Belgium**

This event is *by invitation only*.
You are invited to attend as our *guest*.

Linton Consulting
Insights for Industry and Government

Please join this special invitation dinner meeting to explore ...

Scenarios for Commercial Nuclear Power —Post Fukushima

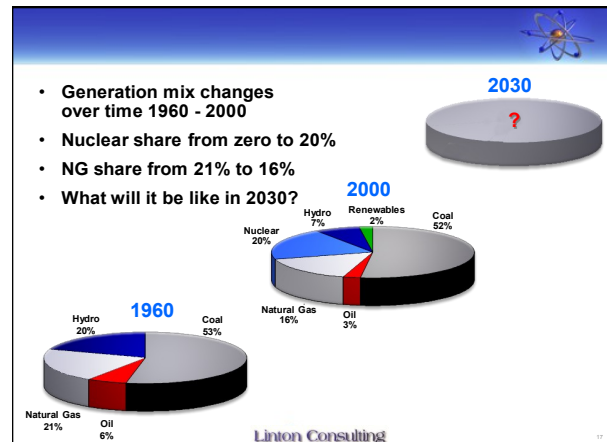
“The nuclear renaissance is already underway globally”, so said a CEO of a major industry supplier in 2008. We have all witnessed the turnaround in the commercial nuclear power industry over the past five years. From 4 new units underway in the U.S. to 20 planned in China and even several in the Middle East (UAE), there has been an unquestionable increase in the level of activity and interest worldwide.

Yet the Fukushima accident in Japan, caused by an earthquake and tsunami have aroused new fears and new resistance to the development and construction of nuclear power plants.

What will be the impact of the Fukushima event on the nuclear revival? Will we see more countries, like Germany, announce plans to exit nuclear? Or, will we see a trend to replace older plants with the latest technologies, stimulating even more construction? What about BWRs vs. PWRs or other preferences?

To explore such questions we invite you to join us for a private, limited attendance dinner meeting with several subject experts who will help us explore the answers.

This Roundtable is being planned for 6:30 – 8:30PM on 25 May at the Thon Brussels City Centre. This is an evening meeting following Day 1 of the *Nuclear Energy Insider Maintenance and Modernization Conference*.



The meeting will include dinner, participant briefings and a moderated discussion in a question and answer format. We expect to limit the Roundtable meeting to 15-20 participants.

An initial briefing will seed the conversations and kick off the Roundtable. Follow-on discussions will explore a range of scenarios and the potential impact on the entire nuclear supply chain:

Key Questions

- What will be the new challenges for the nuclear renaissance now due to Fukushima?
- Will there be a change in direction globally or will it differ by country? (Germany Vs. China.)
- Will there be a new round of regulatory-imposed design requirements and will these delay construction and startup and add costs?
- What are the likely safety upgrades that will be required and what will be the costs?
- What will be the effect on demand for major nuclear suppliers from reactor vendors to EPCs to major component manufacturers?

Please R.S.V.P. as soon as possible. Bill Linton will contact you for advance input and to answer any questions you may have.

Bill@LintonConsulting.com
Tel: 864.901.5398