

A world map in shades of blue, centered on the Atlantic Ocean, serving as a background for the top section of the invitation.

# *Invitation*

Executive Briefing & Roundtable Dinner Meeting

## **Exploring Change for the Nuclear Supply Chain Post Fukushima**

**June 14, 2011 from 7:00 to 9:00 PM  
Nuclear Supply Chain Conference  
Charlotte, NC**

This event is *by invitation only*.  
You are invited to attend as our *guest*.

**Linton Consulting**  
Insights for Industry and Government

*Please join this special invitation dinner meeting ...*

## Exploring Change for the Nuclear Supply Chain —Post Fukushima

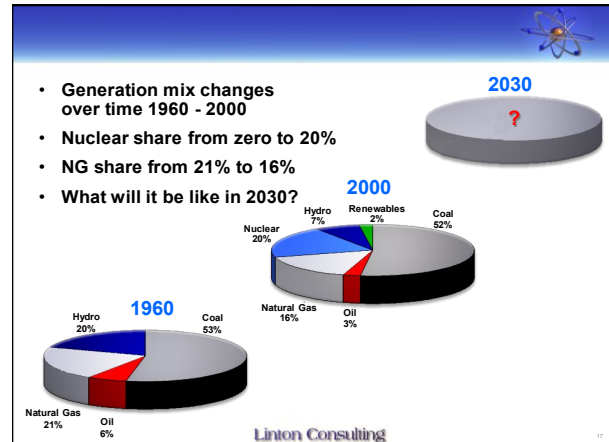
Over the past 5 years we have witnessed a major resurgence of the commercial nuclear power industry. From 4 new units underway in the U.S. to 20 planned in China and even several in the Middle East (UAE), there has been an unquestionable increase in the level of activity and interest worldwide. We have also witnessed a rebuilding and expanding of the nuclear supply chain in selected regions.

Yet the Fukushima accident in Japan, caused by an earthquake and tsunami have aroused new fears and new resistance to the development and construction of nuclear power plants.

What will be the impact of the Fukushima event and *other recent challenges* on the nuclear supply chain? As countries, like Germany and Switzerland announce plans to exit nuclear, will there be a significant reduction in demand? Or, will we see a trend to modernize or replace older plants with the latest technologies, stimulating even more construction? What about BWRs vs. PWRs or other preferences?

To explore such questions we invite you to join us for a private dinner meeting with several subject experts who will help us explore the answers.

This Roundtable is being planned for 7:00 – 9:00PM on June 14 at the Charlotte Crown Plaza. This is an evening meeting following Day 1 of the *Nuclear Energy Insider Supply Chain Conference*.



The meeting will include dinner, a briefing and a moderated discussion in a question and answer format. We expect to limit the Roundtable meeting to 15 participants.

After the initial briefing, discussions will explore a range of scenarios and the potential impact on the entire nuclear supply chain:

### Key Questions

- What will be the new challenges for the nuclear renaissance now due to Fukushima?
- Will demand on the supply chain be reduced, delayed or merely changed?
- Will there be a new round of regulatory-imposed design requirements and will these create demand for different equipment, supplies and services?
- What are the likely safety upgrades that will be required and what will be the focus of these?
- What about supply assurance for Japan-sourced components?
- What will be the effects for major nuclear suppliers from reactor vendors to EPCs and consultants to major component manufacturers?

Please R.S.V.P. as soon as possible. Bill Linton will contact you for advance input and to answer any questions you may have.

**Bill@LintonConsulting.com**  
**Tel: 864.901.5398**